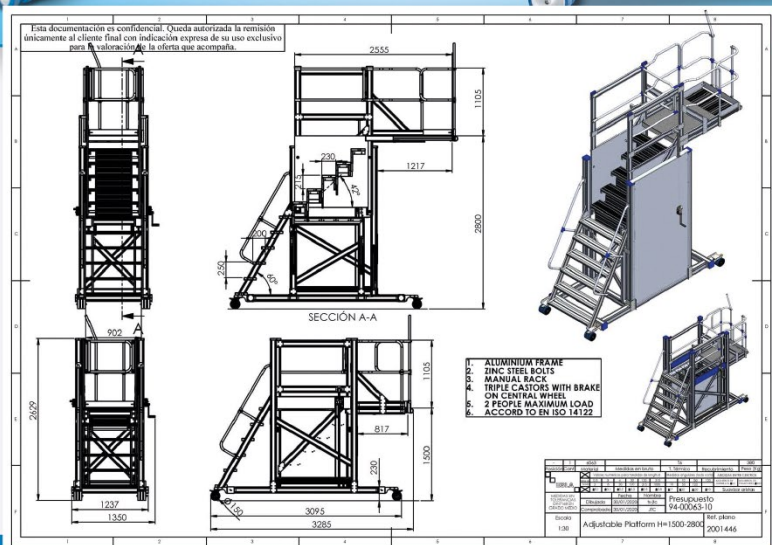


# Height adjustable mobile platform

**COD: 2001446**

- ✓ Lifting platform for railway maintenance
- ✓ Manual lifting System by means of a rack and cranks
- ✓ Equipped with 4 triple wheels
- ✓ The platform consists of 3 parts.
  - 1) Fixed accesible ladder tilted to 60°
  - 2) Liftable part of the rungs, which fold and correct the inclination during elevation
  - 3) Platform that raises and lowers, this is also extendable, and has a hinged front handrail for easy maintenance.



**EUROPEAN SPECIAL LADDERS, S.A.**

Camí del Cementiri, 23.  
Pol. Ind. Can Ribot.  
08319 Dosrius. BARCELONA

**+34 93 753 33 57**